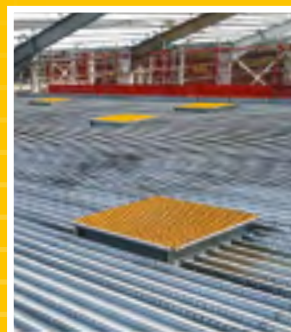
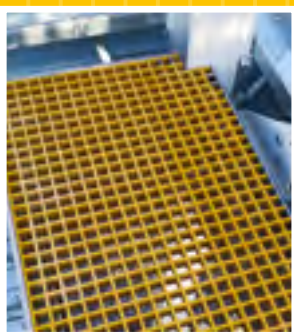




# WHOLE.Protect™

EXCELLENCE IN SAFETY

REMOVE THE COST AND HASSLE OF PROTECTING VOIDS AND RISERS IN THE FLOOR SLABS WITH WHOLE.PROTECT™ MULTI-PURPOSE GRP GRATING.



**PROTECTS VOIDS**  
**IMPROVES SAFETY**  
**SAVES TIME**  
**SAVES MONEY**

Supplied and installed by





# WHOLE.PROTECT™

## Bespoke Void Protection System

Remove the hassle of protecting voids and risers in the floor slabs with the specialist **WHOLE.Protect™** system brought to you by Composite Profiles UK.

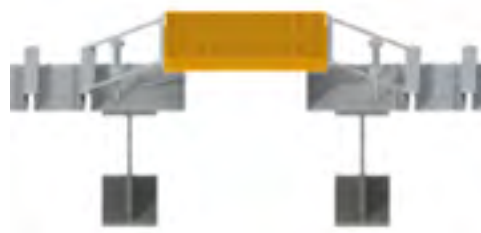
**WHOLE.Protect™** combines the benefits of anti-slip GRP moulded grating with bespoke, specially adapted edge shutter eliminating the need for expensive scaffolding and handrail systems around internal voids in construction builds.

Benefit from integrating void protection seamlessly into your build leaving a safe, clear and uninterrupted working area for all tradesfolk. **WHOLE.Protect™** also provides easy access routes through the decks for follow on trades and should be considered as an essential requirement in every deck installation.

# 1

### DESIGN & EARLY ENGAGEMENT

Before specifying **WHOLE.Protect™**, considerations need to be factored into the deck design (see 'Design Considerations'). Early engagement will ensure the most cost effective solution is developed for your build.



# 2

### ONSITE INSTALL & MODIFICATION

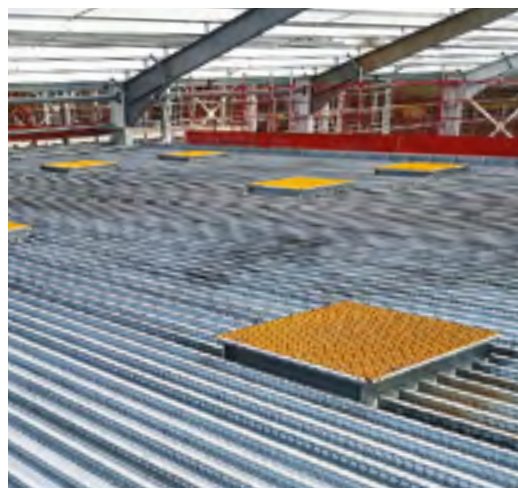
**WHOLE.Protect™** is strong, durable and quick to install. It can be easily modified onsite by skilled installers to suit specific site conditions.



# 3

### DECKING & CONCRETING

**WHOLE.Protect™** can be supplied and installed as a standalone package, supply only or as part of Composite Profiles full metal decking service.



# THE BENEFITS



## SEAMLESS INSTALL

Install as part of the decking system reduces interface between trades and reduces handover issues.



## FALL PROTECTION

Removes the requirements for void edge protection reducing the risk of falling debris or people.



## PERMANENCE

Can be left in place after build completion with services easily incorporated.\*  
*\*Additional support may be required.*



## LIGHTWEIGHT

Lightweight compared to metal grating, easy to raise to deck level.



## SLIP SAFE

GRP material. Greater slip resistance over metal grating.



## DURABLE

Maintenance-free for life.



## COLOURS

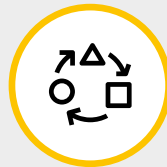
Yellow and Platinum representing Safety & Quality Standards.

*Any RAL colour subject to extended lead time.*



## STRENGTH

Can withstand tough environments.



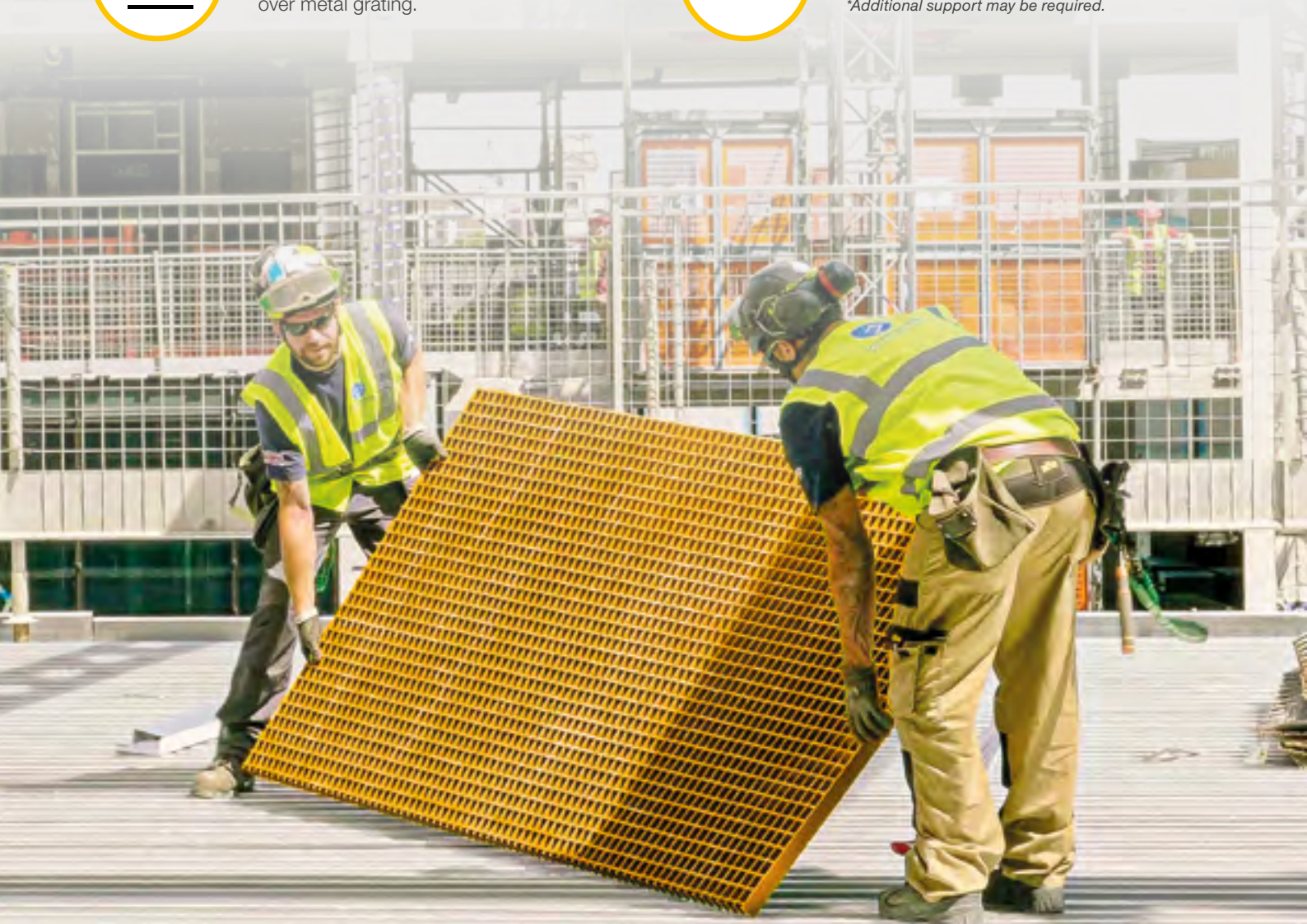
## ADAPTABLE

Suitable for use in a variety of scenarios such as in marine environments or with pre-cast concrete planks. Please enquire to discuss your needs.



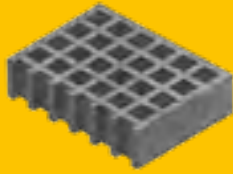
## MODIFIABLE

Can be cut to suit irregular void shapes.\*  
*\*Additional support may be required.*

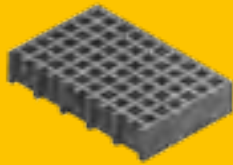


# SPECIFICATIONS

Materials GRP (Glass Reinforced Plastic)

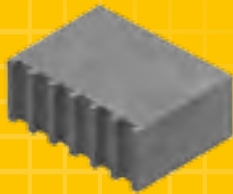


<b>wHOLE.Protect™</b>		
THICKNESS / DEPTH	38mm	
MESH	38mm <sup>2</sup>	
FINISHES	GRP Mesh Grit Top	
WEIGHT	19.5kg per m <sup>2</sup>	



<b>wHOLE.Protect Micro™</b>		
THICKNESS / DEPTH	38mm	
MESH	19mm <sup>2</sup>	
FINISHES	GRP Mesh Grit Top	
WEIGHT	23.5kg per m <sup>2</sup>	

**Passed the 12mm ball test.** Prevents smaller debris falling through (such as pebbles)



<b>wHOLE.Protect Solid™</b>		
THICKNESS / DEPTH	41mm	
MESH	-	
FINISHES	GRP Mesh Grit Top	
WEIGHT	22kg per m <sup>2</sup>	

**Catches 100% of falling debris**

## DESIGN CONSIDERATIONS

To ensure a smooth installation of **wHOLE.Protect™**, certain factors need to be considered during the design phase. For example, whether the trimming steels require studs can affect the steel frame layout; the size of the void will determine whether support is required; and if adaptations or modifications are made, these may also need additional support. Please call to discuss the right solution for your build.

- **Void Size** - max. clear span 1200mm without requiring additional support
- **Slab Edge Locations** – ensure the slab, steelwork and **wHOLE.Protect™** dovetail seamlessly
- **Shear Connectors** – should beam design require shear studs, early engagement is critical to ensure full interaction of each element

Supplied and installed by



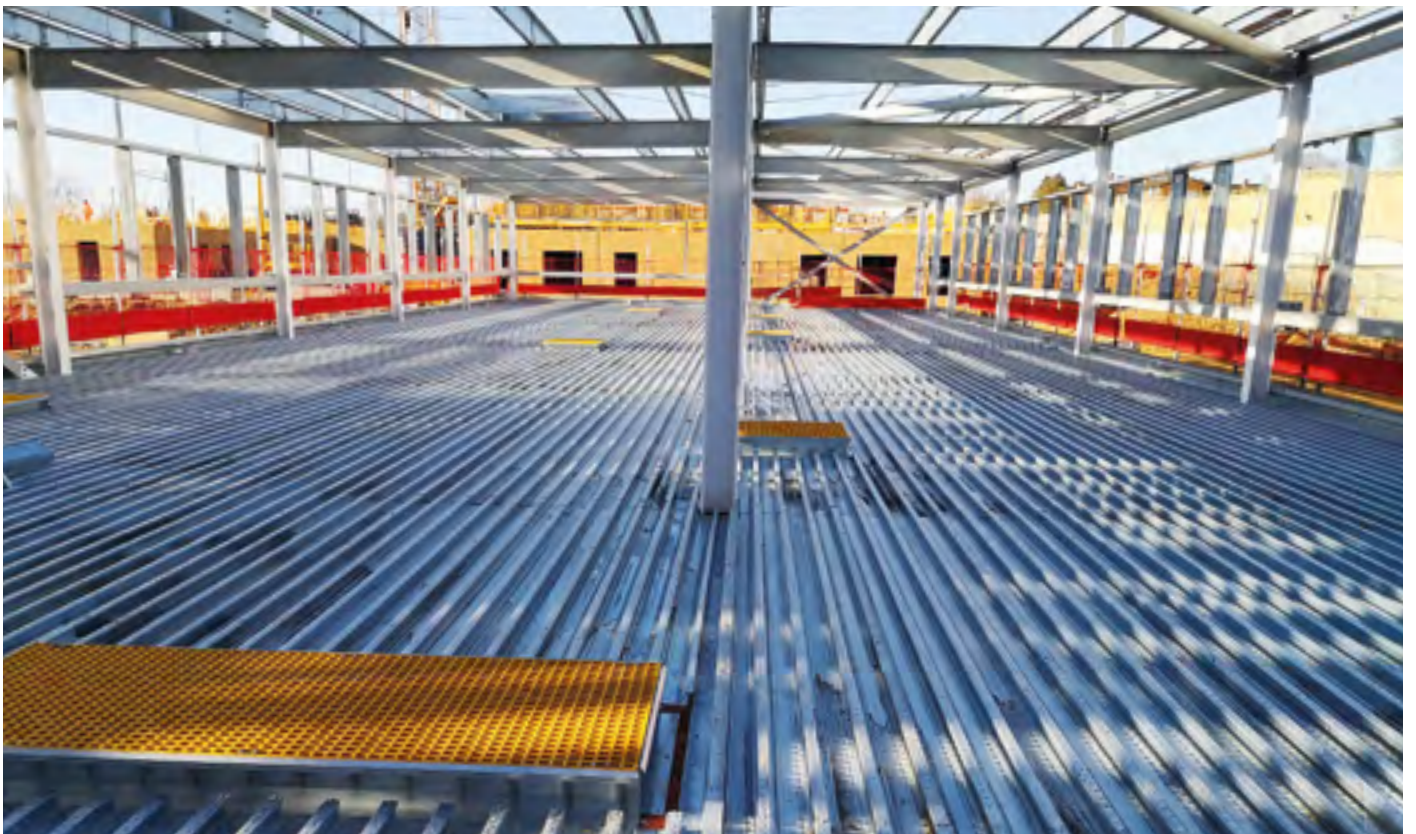
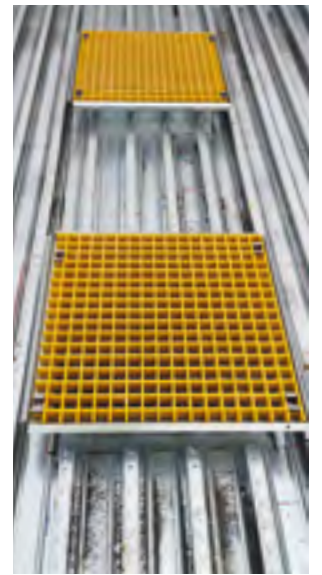
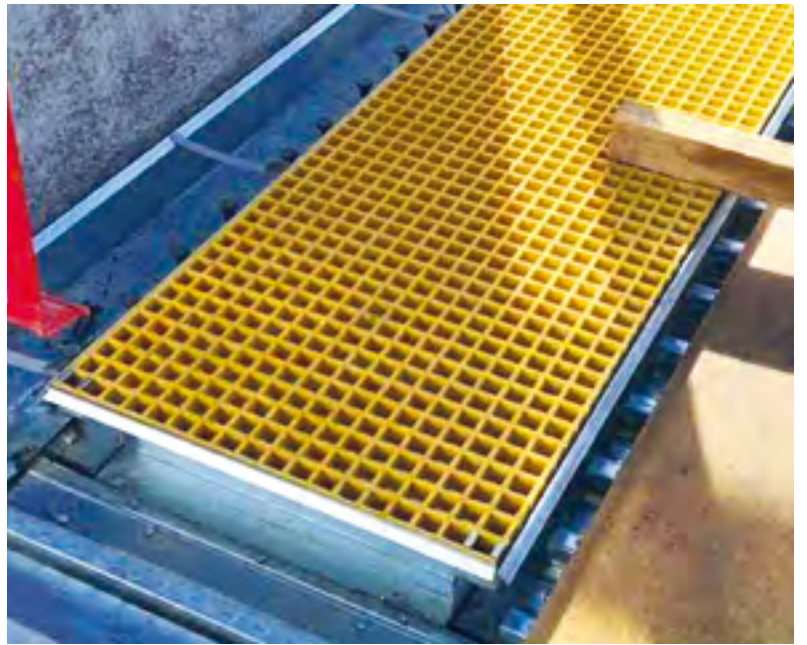
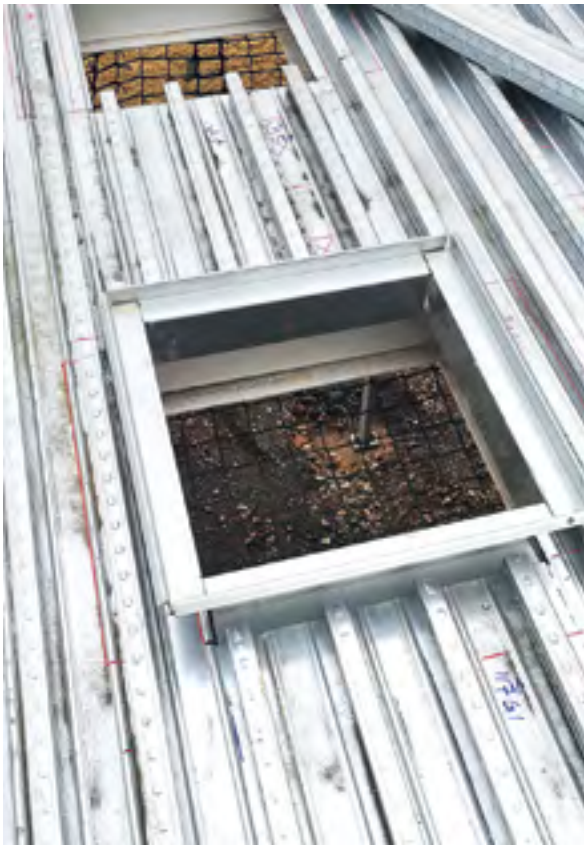
**Composite Profiles**  
BUILDING EXCELLENCE



**wHOLE.Protect™**  
EXCELLENCE IN SAFETY

Please call us on **01202 659 237**  
to discuss full requirements.

[www.compositeuk.com/wholeprotect](http://www.compositeuk.com/wholeprotect)





**wHOLE.Protect™**

EXCELLENCE IN SAFETY



**Composite Profiles**  
BUILDING EXCELLENCE

Unit 9, New Fields Business Park,  
Stinsford Road, Poole, Dorset BH17 0NF

**t:** 01202 659 237 **e:** [contact@compositeuk.com](mailto:contact@compositeuk.com)

**[www.compositeuk.com](http://www.compositeuk.com)**

**INVESTORS IN PEOPLE™**  
We invest in people Platinum



**FASET**  
Fall Arrest Safety Equipment Training